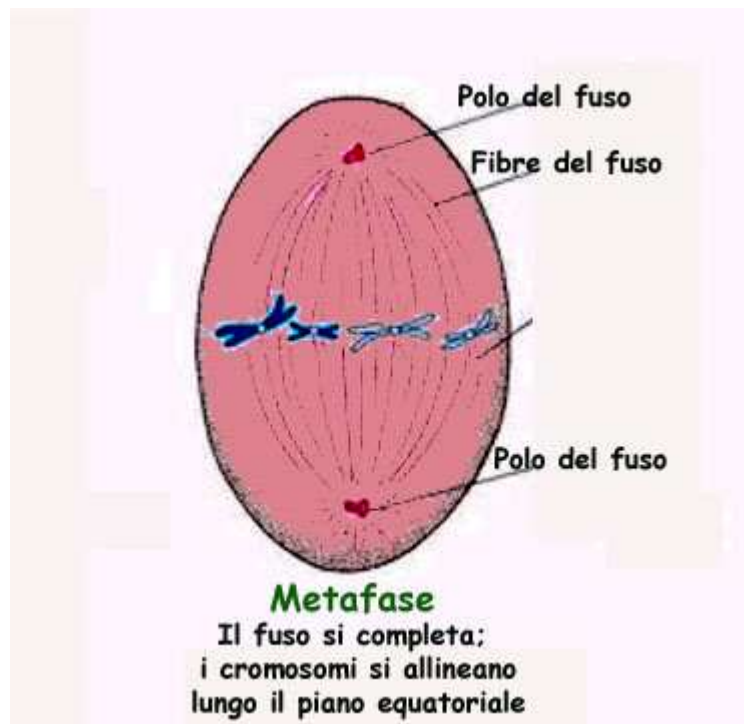
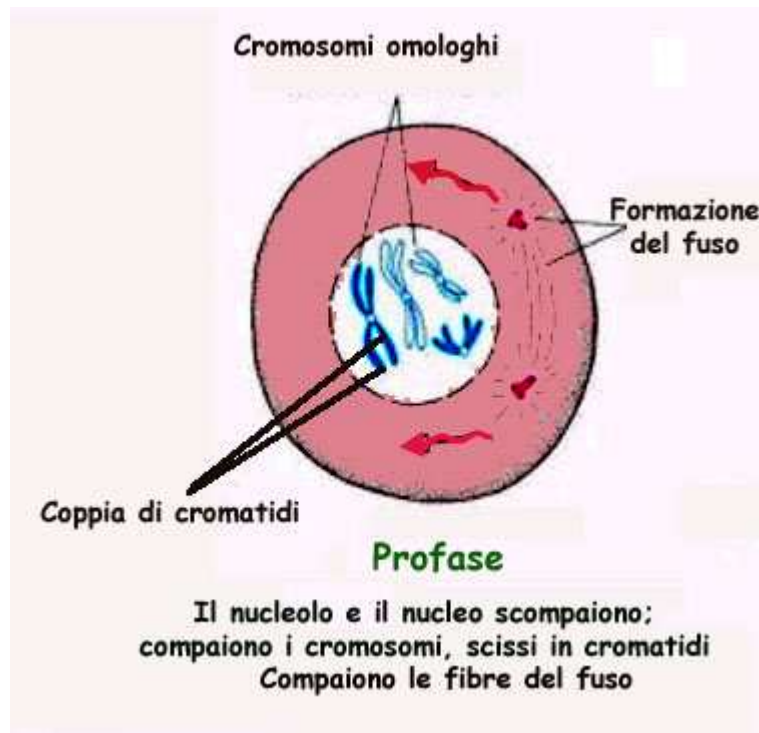
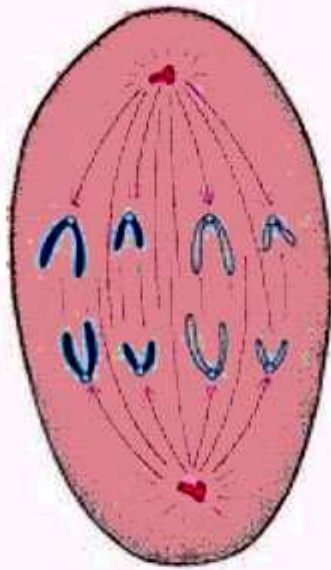


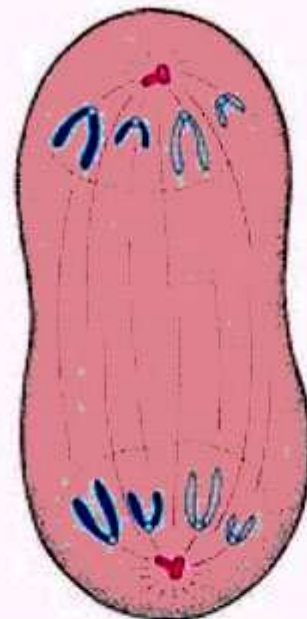
Le fasi della mitosi in rappresentazione grafica





Anafase

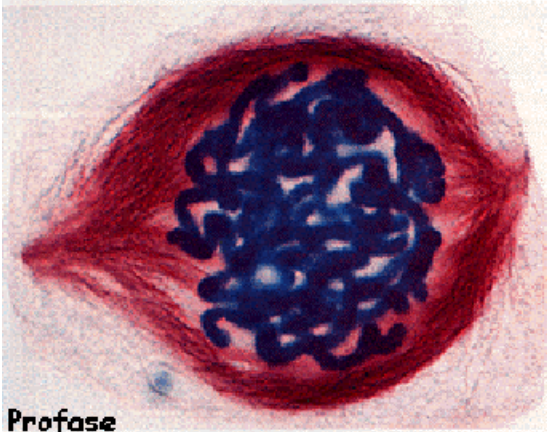
Il centromero di ciascun cromosoma si divide e i cromatidi separano, originando due cromosomi indipendenti



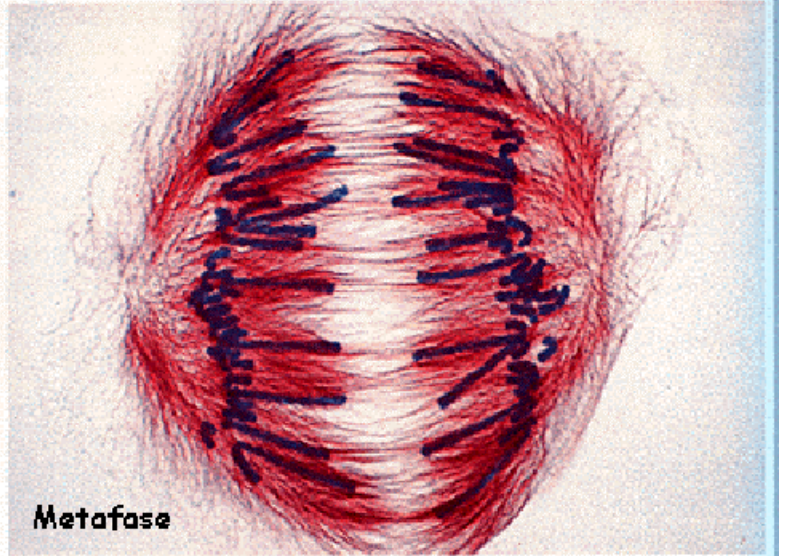
Telofase

I due cromatidi fratelli ogni cromosoma raggiungono ciascuno i poli opposti del fuso

Le fasi fotografate al Microscopio Ottico



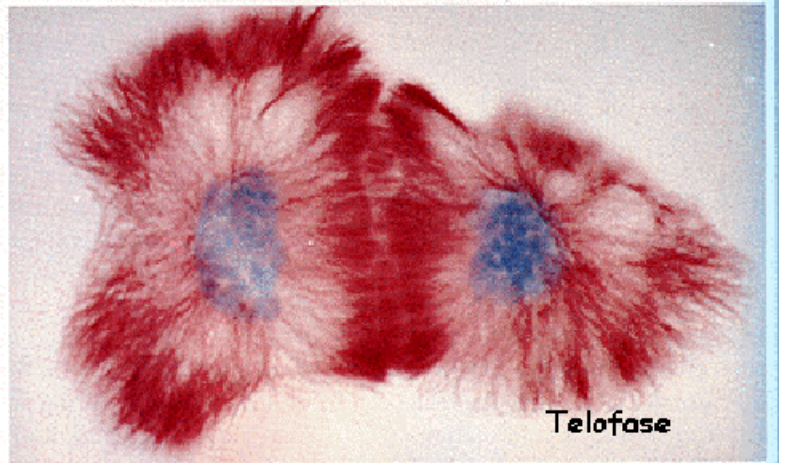
Profase



Metafase



Anafase



Telofase